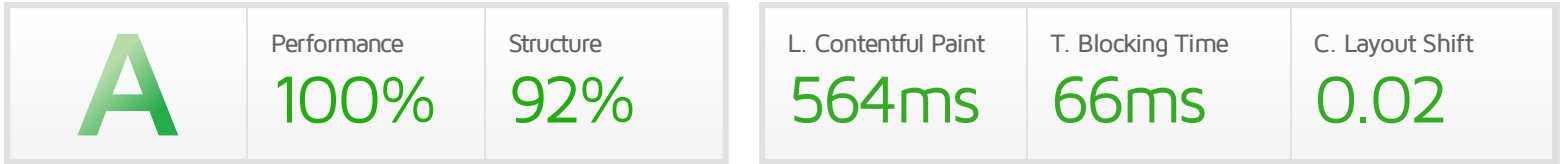


Performance Report for: <https://petri.com/>

Report generated: Wed, Jul 26, 2023 4:23 AM -0700
 Test Server Location: London, UK
 Using: Chrome (Desktop) 103.0.5060.134, Lighthouse 9.6.4



Top Issues

| IMPACT | AUDIT | |
|---------|--|----------------------------|
| Med | Avoid an excessive DOM size <small>TBT</small> | 1,934 elements |
| Med-Low | Serve static assets with an efficient cache policy | Potential savings of 186KB |
| Low | Properly size images | Potential savings of 455KB |
| Low | Defer offscreen images | Potential savings of 401KB |
| Low | Eliminate render-blocking resources <small>FCP LCP</small> | Potential savings of 33ms |

Page Details



Total Page Size - 1.55MB



Total Page Requests - 88



■ HTML
 ■ JS
 ■ CSS
 ■ IMG
 ■ Video
 ■ Font
 ■ Other

How does this affect me?

Today's web user expects a fast and seamless website experience. Delivering that fast experience can result in increased visits, conversions and overall happiness.

As if you didn't need more incentive, **Google has announced that they are using page speed in their ranking algorithm.**

About GTmetrix

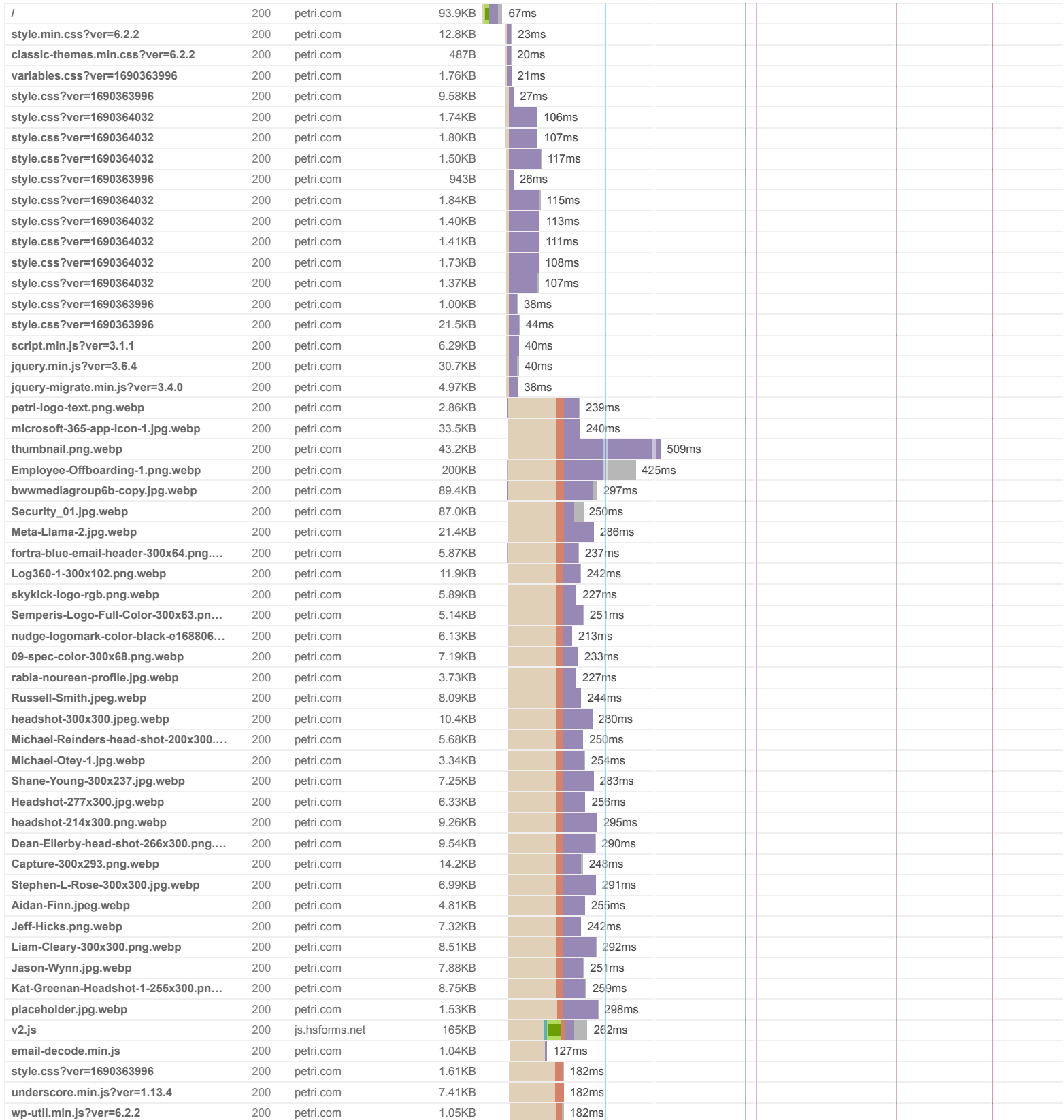


GTmetrix is developed by the good folks at Carbon60, a Canadian hosting company with over 27 years experience in web technology.

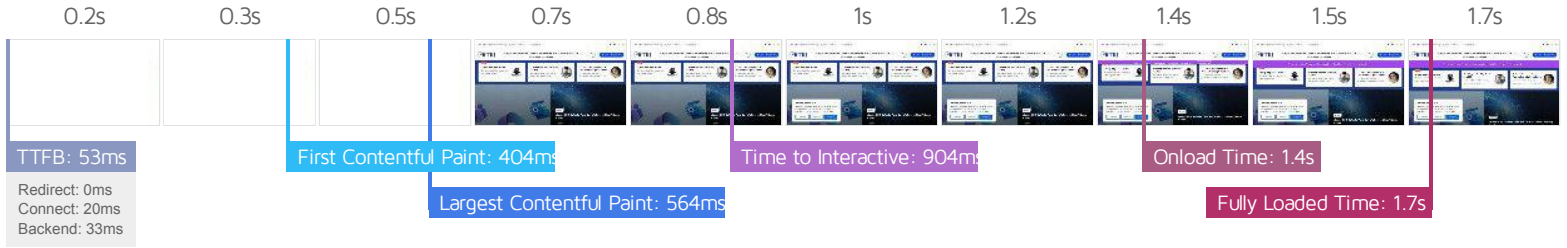
<https://carbon60.com/>

The waterfall chart displays the loading behaviour of your site in your selected browser. It can be used to discover simple issues such as 404's or more complex issues such as external resources blocking page rendering.

Homepage - Petri IT Knowledgebase



| | | | | | | | | | |
|--|-----|-----------------------------|--------|--|-------|--|--|--|--|
| lodash.min.js?ver=4.17.19 | 200 | petri.com | 24.7KB | | 233ms | | | | |
| app.min.js?ver=0.0.21 | 200 | petri.com | 17.5KB | | 233ms | | | | |
| frontend.min.js?ver=1.1.24 | 200 | petri.com | 1.82KB | | 212ms | | | | |
| high-impact-ad.min.js?ver=1.1.24 | 200 | petri.com | 1.03KB | | 214ms | | | | |
| v8b253dfea2ab4077af8c6f58422dfbfd... | 200 | static.cloudflareinsight... | 6.91KB | | 245ms | | | | |
| print.css?ver=1.1.24 | 200 | petri.com | 495B | | 239ms | | | | |
| gtm.js?id=GTM-PJPBJWX | 200 | googletagmanager.com | 64.2KB | | 129ms | | | | |
| tag.aspx?266 | 200 | ml314.com | 10.3KB | | 97ms | | | | |
| jared-brashier-6WPcf5D1XdA-unspla... | 200 | petri.com | 27.2KB | | 146ms | | | | |
| petri-newsletter-category-bg.jpg.webp | 200 | petri.com | 15.0KB | | 149ms | | | | |
| font-manrope-regular.ttf | 200 | petri.com | 92.7KB | | 168ms | | | | |
| font-manrope-bold.ttf | 200 | petri.com | 92.7KB | | 153ms | | | | |
| UnPlugIT-Ticker---1-1.jpg.webp | 200 | petri.com | 1.51KB | | 29ms | | | | |
| Ticker-75x75---2-1.png.webp | 200 | petri.com | 2.05KB | | 26ms | | | | |
| Ticker-75x75---5.png.webp | 200 | petri.com | 1.84KB | | 27ms | | | | |
| Windows_03-768x432.jpg.webp | 200 | petri.com | 15.8KB | | 116ms | | | | |
| fellowneko123RFCOM-768x432.jpg.w... | 200 | petri.com | 18.3KB | | 106ms | | | | |
| Cloud_05-768x432.jpg.webp | 200 | petri.com | 19.0KB | | 109ms | | | | |
| Teams-2-768x432.png.webp | 200 | petri.com | 13.1KB | | 111ms | | | | |
| json?hs_static_app=forms-embed&h... | 200 | forms.hsforms.com | 2.31KB | | 159ms | | | | |
| utsync.ashx?pub=&adv=&et=0&eid=8... | 200 | ml314.com | 62B | | 21ms | | | | |
| json?hs_static_app=forms-embed&h... | 200 | forms.hsforms.com | 1.78KB | | 174ms | | | | |
| analytics.js | 200 | google-analytics.com | 20.5KB | | 29ms | | | | |
| js?id=G-YG7H30PNYP&l=dataLayer&... | 200 | googletagmanager.com | 85.4KB | | 43ms | | | | |
| revisit.svg | 200 | petri.com | 1.29KB | | 28ms | | | | |
| close.svg | 200 | petri.com | 945B | | 28ms | | | | |
| poweredbtcky.svg | 200 | petri.com | 1.79KB | | 19ms | | | | |
| counters.gif?key=forms-embed-v2-D... | 200 | forms.hsforms.com | 623B | | 130ms | | | | |
| tiny-slider.css?version=0.0.21 | 200 | petri.com | 0.98KB | | 35ms | | | | |
| tiny-slider.min.js?version=0.0.21 | 200 | petri.com | 12.7KB | | 24ms | | | | |
| hia-information?post_id=694097&tim... | 200 | petri.com | 48B | | 684ms | | | | |
| counters.gif?key=forms-embed-v2-R... | 200 | forms-na1.hsforms.com | 0.99KB | | 140ms | | | | |
| POST rum? | 204 | petri.com | 177B | | 15ms | | | | |
| cropped-Petri-P-1024x1024-1-32x32.png | 200 | petri.com | 313B | | 33ms | | | | |
| 88 Requests 1.54MB (3.21MB Uncompressed) Fully Loaded 1.7s (Onload 1.4s) | | | | | | | | | |



Performance Metrics

| | | | |
|--|--|---|--|
| <p>First Contentful Paint</p> <p>How quickly content like text or images are painted onto your page. A good user experience is 0.9s or less.</p> | <p>Good - Nothing to do here</p> <p>403ms</p> | <p>Time to Interactive</p> <p>How long it takes for your page to become fully interactive. A good user experience is 2.5s or less.</p> | <p>Good - Nothing to do here</p> <p>903ms</p> |
| <p>Speed Index</p> <p>How quickly the contents of your page are visibly populated. A good user experience is 1.3s or less.</p> | <p>Good - Nothing to do here</p> <p>815ms</p> | <p>Total Blocking Time</p> <p>How much time is blocked by scripts during your page loading process. A good user experience is 150ms or less.</p> | <p>Good - Nothing to do here</p> <p>66ms</p> |
| <p>Largest Contentful Paint</p> <p>How long it takes for the largest element of content (e.g. a hero image) to be painted on your page. A good user experience is 1.2s or less.</p> | <p>Good - Nothing to do here</p> <p>564ms</p> | <p>Cumulative Layout Shift</p> <p>How much your page's layout shifts as it loads. A good user experience is a score of 0.1 or less.</p> | <p>Good - Nothing to do here</p> <p>0.02</p> |

Browser Timings

| | | | | | |
|------------|-------|-------------|-------|--------------|-------|
| Redirect | 0ms | Connect | 20ms | Backend | 33ms |
| TTFB | 53ms | First Paint | 402ms | DOM Int. | 846ms |
| DOM Loaded | 870ms | Onload | 1.4s | Fully Loaded | 1.7s |

| IMPACT | AUDIT | |
|---------|--|----------------------------------|
| Med | Avoid an excessive DOM size TBT | 1,934 elements |
| Med-Low | Serve static assets with an efficient cache policy | Potential savings of 186KB |
| Low | Properly size images | Potential savings of 455KB |
| Low | Defer offscreen images | Potential savings of 401KB |
| Low | Eliminate render-blocking resources FCP LCP | Potential savings of 33ms |
| Low | Reduce unused JavaScript LCP | Potential savings of 116KB |
| Low | Avoid enormous network payloads LCP | Total size was 1.55MB |
| Low | Avoid long main-thread tasks TBT | 4 long tasks found |
| Low | Reduce JavaScript execution time TBT | 399ms spent executing JavaScript |
| Low | Reduce unused CSS FCP LCP | Potential savings of 32.4KB |
| Low | Serve images in next-gen formats | Potential savings of 11.8KB |
| Low | Reduce initial server response time FCP LCP | Root document took 33ms |
| Low | Avoid serving legacy JavaScript to modern browsers TBT | Potential savings of 4.58KB |
| Low | Avoid non-composited animations CLS | 1 animated element found |
| Low | Avoid chaining critical requests FCP LCP | 28 chains found |
| N/A | Largest Contentful Paint element LCP | 1 element found |
| N/A | Avoid large layout shifts CLS | 5 elements found |
| N/A | Minimize main-thread work TBT | Main-thread busy for 1.8s |
| N/A | Reduce the impact of third-party code TBT | Total size was 354KB |
| N/A | User Timing marks and measures | |